

# Particle View RT Software

---

Particle View RT software includes all of the functions required for recording real time data, viewing data (both real time and historical), and producing tabular and graphic reports needed for most users of clean rooms and controlled environments. It is designed for use with the Met One Instruments, Inc. line of hand held and bench mounted particulate counting products.

## Key Features:

### Real Time Monitoring

Real-Time Data Collection via COM Ports and the Network. Connect up to 32 Met One Instruments.

### Data History

View past and present data with the data history screen.

### Charts/Graphs

View, print, and export data visually using charts and graphs.

### Reports

View, print, and export tabular reports. Export spreadsheet compatible files (CSV format).

### Alarms

Particle count, temperature, and relative humidity alarm limits (High, High-High, Low, Low-Low).

### Sort/Filter Data

Sort data by date/time, location, and/or particle count. Filter data by date/time, location, and/or particle size.

### Unit Conversions

Concentration conversions (particles/liter, particles/cubic foot, particles/cubic meter) and temperature (°C or °F).

### Security

Meets the essential elements of 21 CFR part 11 such as: Audit trails, user logins and passwords, data integrity, and data security using a secure SQL database.



## Applications:

Clean Rooms

Controlled Environments

## System Requirements:

Disk Space:	1.5GB
Operating System:	Win XP, Win Vista, Win 7, Win 8
Processor Speed:	2GHz or faster
Memory:	4GB or more



# Particle View RT Images

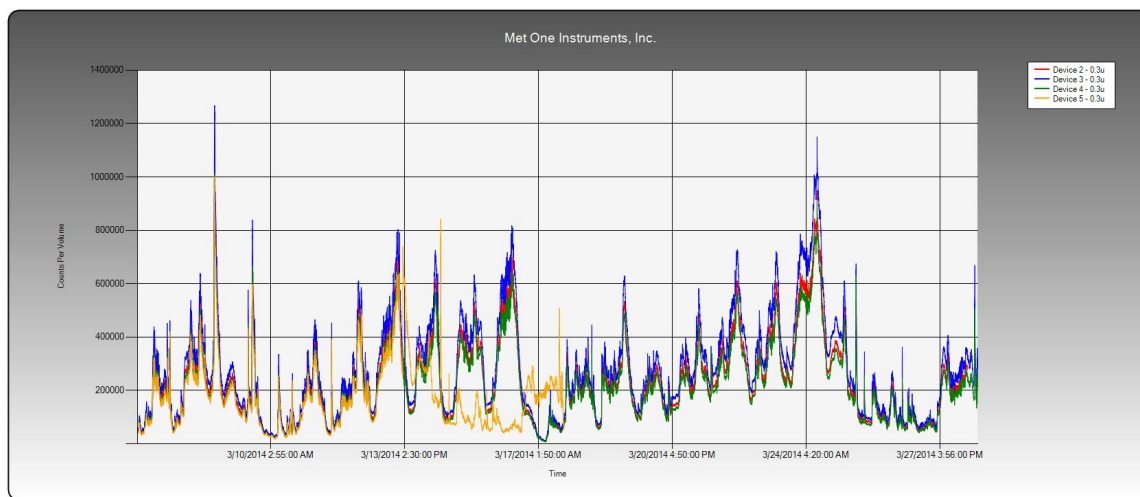
Real Time  
Monitoring

Device Name	Status	Time	Device Name	0.3u	0.5u	1u	2.5u	5u	10u	Celsius	Humidity (%)	Status	Notes
Device A	Online	2014-06-24 14:50:30	Device A	111375	13874	968	203	101	29	23	35	0	
Device B	Online	2014-06-24 14:50:30	Device B	111463	14271	995	208	104	30	23	35	0	
Device C	Online	2014-06-24 14:50:30	Device C	101487	12643	882	185	92	27	23	35	0	
Device D	Online	2014-06-24 14:50:30	Device D	107310	12368	932	195	97	28	23	35	0	
Device E	Online	2014-06-24 14:50:30	Device E	113817	14179	989	207	103	30	23	35	0	
Device F	Online	2014-06-24 14:50:30	Device F	109285	13614	949	199	99	29	23	35	0	
Device G	Online	2014-06-24 14:50:30	Device G	114724	14292	997	209	104	30	23	35	0	
Device H	Online	2014-06-24 14:50:30	Device H	110928	13819	964	202	101	29	23	35	0	
Device I	Online	2014-06-24 14:50:30	Device I	112146	13870	974	204	102	30	23	35	0	
Device J	Online	2014-06-24 14:50:30	Device J	108814	13555	945	198	99	29	23	35	0	
Device K	Online	2014-06-24 14:50:30	Device K	119195	14842	1035	217	108	31	23	35	0	
Device L	Online	2014-06-24 14:50:30	Device L	110425	13756	959	201	100	29	23	35	0	
Device M	Online	2014-06-24 14:50:30	Device M	116168	14471	1009	211	105	31	23	35	0	
Device N	Online	2014-06-24 14:50:30	Device N	102946	12824	894	187	93	27	23	35	0	
Device O	Online	2014-06-24 14:50:30	Device O	109572	13201	921	193	96	28	23	35	0	
Device P	Online	2014-06-24 14:50:30	Device P	116886	14528	1015	213	106	31	23	35	0	
Device Q	Online	2014-06-24 14:50:30	Device Q	102073	12716	887	186	93	27	23	35	0	
Device R	Online	2014-06-24 14:50:30	Device R	104472	13014	908	190	95	28	23	35	0	
Device S	Online	2014-06-24 14:50:30	Device S	118175	14834	1034	217	108	31	23	35	0	
Device T	Online	2014-06-24 14:50:30	Device T	103019	12833	895	187	93	27	23	35	0	
Device U	Online	2014-06-24 14:50:30	Device U	107495	13386	933	196	98	28	23	35	0	
Device V	Online	2014-06-24 14:50:30	Device V	111561	13887	969	203	101	29	23	35	0	
Device W	Online	2014-06-24 14:50:30	Device W	100000	12457	869	182	91	26	23	35	0	
Device X	Online	2014-06-24 14:50:30	Device X	106295	13241	923	193	96	28	23	35	0	
Device Y	Online	2014-06-24 14:50:30	Device Y	113917	14191	990	207	103	30	23	35	0	
Device Z	Online	2014-06-24 14:50:30	Device Z	119725	14915	1040	218	109	32	23	35	0	
Device ZZ	Online	2014-06-24 14:50:30	Device ZZ	103336	12873	898	188	94	27	23	35	0	

Reports

Time	Device Name	0.3u	0.5u	1u	2.5u	5u	10u	Humidity (%)	Celsius	Duration	Status	Offline	Notes
2014-06-24 13:54:01	Device B	100915	12958	876	183	91	27	35	23	30	0	False	
2014-06-24 13:54:01	Device C	102562	14628	1034	217	108	31	35	23	30	0	False	
2014-06-24 13:54:01	Device D	102562	12778	891	187	93	27	35	23	30	0	False	
2014-06-24 13:54:01	Device E	112289	13989	976	204	102	30	35	23	30	0	False	
2014-06-24 13:54:01	Device F	108814	14940	1042	218	109	32	35	23	30	0	False	
2014-06-24 13:54:01	Device G	106853	13311	900	194	97	28	35	23	30	0	False	
2014-06-24 13:54:01	Device H	100597	13279	926	194	97	28	35	23	30	0	False	
2014-06-24 13:54:01	Device I	108298	13942	944	198	99	29	35	23	30	0	False	
2014-06-24 13:54:01	Device J	107712	13419	939	198	98	28	35	23	30	0	False	
2014-06-24 13:54:01	Device K	117872	14684	1024	215	107	31	35	23	30	0	False	
2014-06-24 13:54:01	Device L	115498	14388	1003	210	105	30	35	23	30	0	False	
2014-06-24 13:54:01	Device M	104639	13035	909	190	95	28	35	23	30	0	False	
2014-06-24 13:54:01	Device N	107719	13419	936	198	98	28	35	23	30	0	False	
2014-06-24 13:54:01	Device O	107191	12875	884	185	92	27	35	23	30	0	False	
2014-06-24 13:54:01	Device P	107859	13438	937	198	98	28	35	23	30	0	False	
2014-06-24 13:54:01	Device Q	102722	12798	892	187	93	27	35	23	30	0	False	
2014-06-24 13:54:01	Device R	106347	13248	924	193	97	28	35	23	30	0	False	
2014-06-24 13:54:01	Device S	106562	13275	928	194	97	28	35	23	30	0	False	
2014-06-24 13:54:01	Device T	103815	12933	902	189	94	27	35	23	30	0	False	
2014-06-24 13:54:01	Device U	105407	13131	916	192	96	28	35	23	30	0	False	
2014-06-24 13:54:01	Device V	109584	13651	952	199	99	29	35	23	30	0	False	
2014-06-24 13:54:01	Device W	117393	14624	1020	214	107	31	35	23	30	0	False	
2014-06-24 13:54:01	Device X	110037	13708	956	200	100	29	35	23	30	0	False	
2014-06-24 13:54:01	Device Y	117335	14817	1019	214	107	31	35	23	30	0	False	
2014-06-24 13:54:01	Device Z	107221	13357	901	195	97	28	35	23	30	0	False	
2014-06-24 13:54:01	Device ZZ	117947	14693	1025	215	107	31	35	23	30	0	False	

Charts/Graphs



Rev. July 2015



**Met One  
Instruments, Inc.**

1600 Washington Blvd. • Grants Pass, OR 97526 • 541.471.7111 • [www.metone.com](http://www.metone.com)  
[sales@metone.com](mailto:sales@metone.com)